

Hattiesburg Area Historical Society

HAHS MUSEUM
Hattiesburg Cultural Center
723 Main Street
Mailing: P.O. Box 1573
Hattiesburg, MS 39403-1773
Web Site: www.hahsmuseum.org
E-mail:
hahsmuseum@megagate.com

IT'S THE LITTLE THINGS THAT MAKE HATTIESBURG SO INTERESTING

Most of us have enjoyed ABC books. Although not intended solely for children, these books quickly became associated with simple teachings and early learning. From the 15th century through the 18th century the Primer, for students of all ages, often opened with a page of the letters. In 1596, Shakespeare even mentioned the "Absey book" in *King John*.

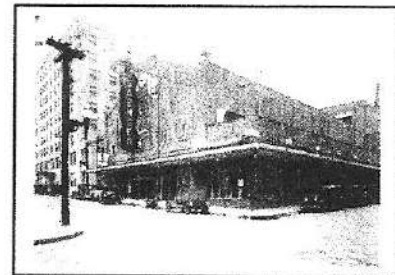
In early books, the alphabet appeared in table form. Eventually, illustrations were added to the letters, as a mnemonic aid. In the nineteenth century, ABC books became a way to teach children the alphabet and introduce them to new subjects. Although the subjects were extremely varied, the format was generally a single word or rhyming verse accompanying an image for each letter.

In the twentieth century authors continued to expand the variety of subjects addressed by ABC books and explored the style as much as the subject. The ABC book genre now includes texts that do not instruct but instead provide amusement for an audience already familiar with the alphabet. This variation on our city seeks to do both. After all, it's the interesting "little things" that make Hattiesburg, MS so special.



H is for Hattie for whom we are named,

Hattie Lott was the second wife of city founder William Harris Hardy. It is the only city named Hattiesburg in all the world.

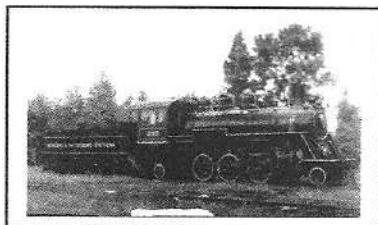


A is for artistic works of acclaim.

The Saenger Theatre has hosted many artistic productions since its opening on Thanksgiving Day in 1929.

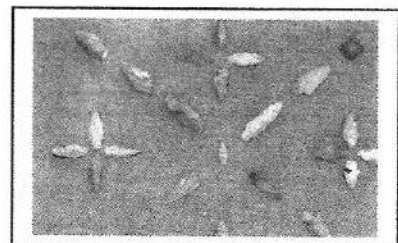
T is for trees—the oaks, dogwoods, and pines;

Timber was the main industry in the city's early days. Area timber helped build the Panama Canal and repair the USS Constitution.



T is for trains and all of their lines.

Four major railroads radiating outwards, as the spokes of a wheel, earned Hattiesburg its "Hub City" nickname in 1912.



E is for encampment of soldiers so near.

Camp Shelby, opened in 1917, was named for Kentucky's first governor. Do you know why?

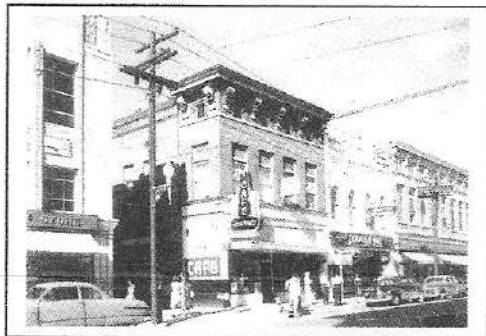
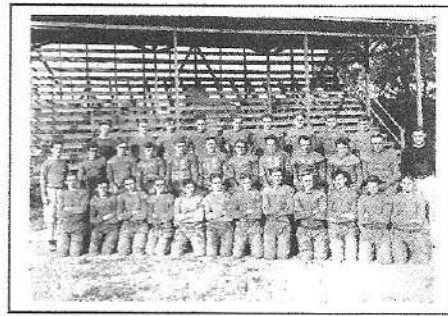


I is for Indians—Choctaw first settled here;

Tradition holds that a Choctaw village called "Twin Forks" stretched for twelve miles along the west bank of the Leaf.

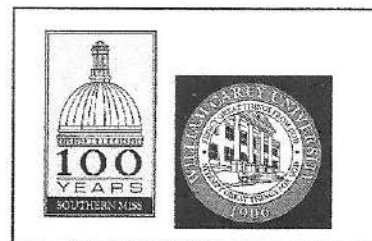
**S is for sports and all of our teams;
It's also for stadiums and fields of our dreams.**

Before our modern stadiums were built USM's first football game was played at Kamper Park. The city's first official baseball field was constructed there.



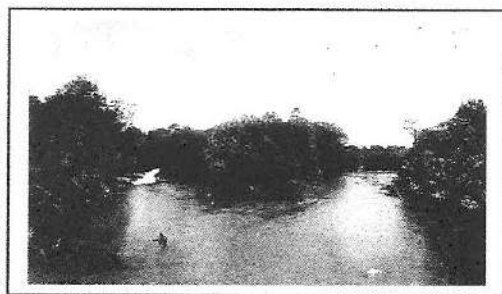
B is for buildings—the old and the new;

Recognizable buildings of downtown Hattiesburg's skyline were all built after the Great Fire of 1893.



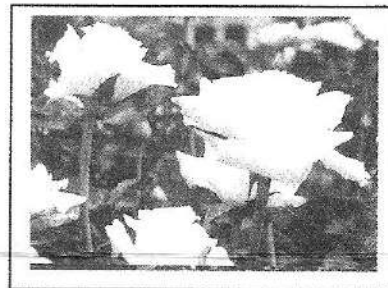
U is for universities—USM and WCU.

Hattiesburg is the proud home of two major universities of renown.



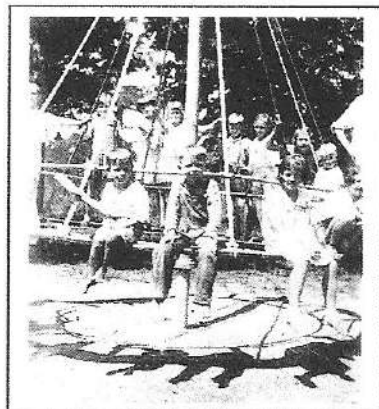
R is for rivers—the Bouie and the Leaf;

Choctaw legend says that no tornadoes will strike at the confluence to two rivers encouraging them to settle here.



G is for gardens where roses are chief.

USM's All American Rose Garden features hybrid-T and Grandiflora patented bushes. The Hattiesburg Area Rose Society and USM ground department maintain them. However, the daylily became the city's official flower in 2010.



M is for multiple things you can do.

Many recreational activities are available in our city. Kamper Park and the Hattiesburg Zoo have been enjoyed by children since the early 1900's. Circa 1940 playground equipment varied from today's, but provided plenty of fun.

S is for seeing historic sites too.

Artist Bill Wilson created this pictorial collage of scenes in downtown Hattiesburg. The color artwork was commissioned in celebration of the Depot's 100th anniversary.

