

Hattiesburg Area Historical Society

HAHS MUSEUM
TEMP LOCATION
107 PARK AVENUE
P O BOX 1573
HATTIESBURG MS
39403-1573
601 545-4582

Book Update/Move . . .

After having to move HAHS MUSEUM from space in the Saenger, five months ahead of schedule, THE HISTORY OF FORREST COUNTY, MISSISSIPPI book is about where it was last December with publication in the next few months in site.

Faithful Board Members along with Laurie Crowson, Beth Meador, Martha Ann Gunn, Mary Elizabeth Moore, Margaret Nichols, and Theresa Setz, have worked diligently to keep completed stories flowing to Dianne Sellers as well as adjust to the move.

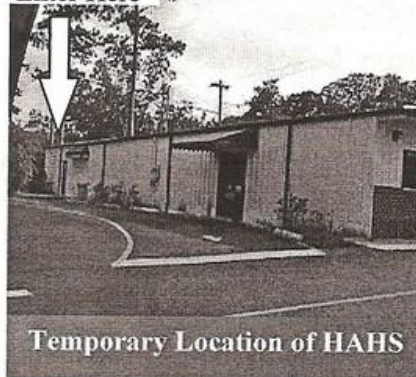
Ken Cooley paneled over the thousands of ceramic molds making the room usable for HAHS purposes. The continuing help of Dee Tatum and Bob Hendrix has organized stored collections from boxes to

availability.

After 23 years, workers do not have to lock and unlock doors and go outside from Museum to Workroom. . . AND THERE ARE RESTROOM FACILITIES!!

Still, many items are stored elsewhere, and the Hattiesburg Area Historical Society continues to look forward to expansion into the HAHS half of the Main Street library building.

Enter Here



Temporary Location of HAHS

INSIDE THIS ISSUE:

Summer Hours	2
Genealogical Society	2
Collections Update	3
HAHS Program	3

**ON DISPLAY AT
THE HATTIESBURG
AREA HISTORICAL
SOCIETY MUSEUM**

THIS CENTURY OF CHANGE

PICTURES

INSIDE THIS
ISSUE

Dues . . .

Please pay your 1999 HAHS dues!

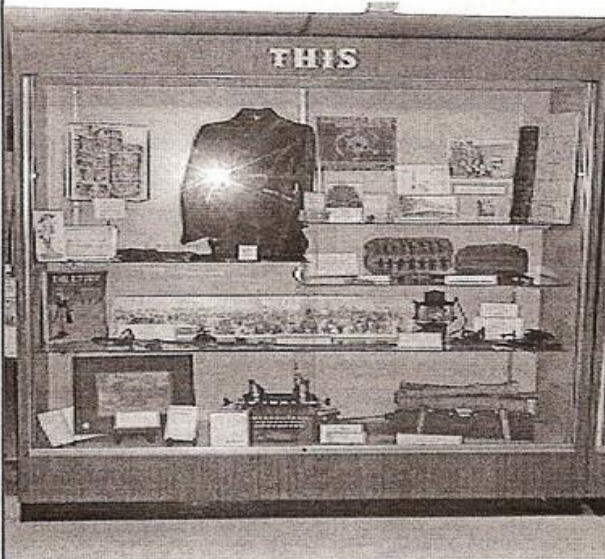
If your mailing label has '99 you are paid up. (see example on page 4)

Nominal dues, memorials and donations fund HAHS projects, activities

and mailings. Please support this important organization as it teaches the past applied to the present and future.

A card and preaddressed envelope are enclosed for your convenience.

When does the 20th Century End



c. 1900-1925
 Pre 1900 - Indian hieroglyphics signs
 1900 - Wedding Coat
 1912 - Hub Sign Bulb
 1925 - Railroad Signal Light



c. 1926-1950
 1920's - Lion bank
 1927 - Hattiesburg High Football
 1935 - Rag knitting
 1945 - Iwo Jima

HAHS Museum Temporary Location

107 S. Park Avenue

Kamper Park, back door of the ex-Ceramics Building (currently the city water department), across from Cameron Ball Park and close to the tennis courts.

Summer Hours:
Monday - Thursday
2:30 - 4:30 p.m.

By Chance 545-4582
By Appointment 583-1362

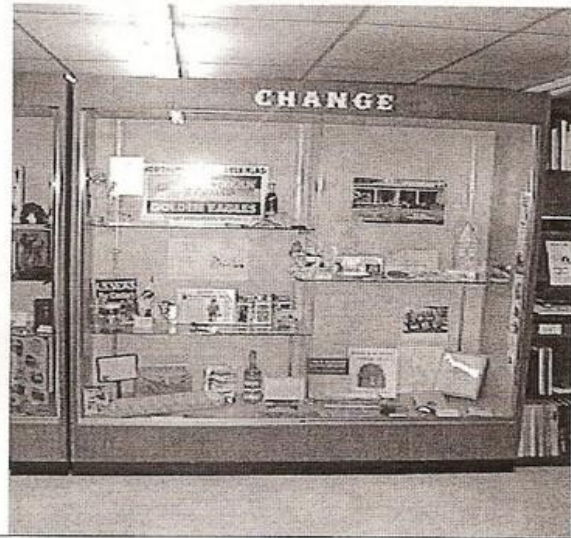
Hours will be expanded with the increase of more HAHS volunteers.

South Mississippi Genealogical Society

Now meeting at the HAHS Museum on the **second Thursday** of each month at 7:00 p.m. Next meeting will be held **Thursday, July 8, 1999**. The program will be *Unique Court Records* and will be presented by Maurine Mattson. Ms. Mattson is an information specialist in Library at Watkins, Ludan, Winter and Sterns in Jackson.

Also, thanks to the South Mississippi Genealogical Society, the HAHS Museum now has a copy of *Forrest County, Mississippi Tombstone Inscriptions* and other genealogical materials for the permanent collection.

and the new Millenium start 2000AD or 2001AD ???



c. 1951-1975
 1950's - Girl Scout 50th birthday
 1951 - Hawkins Junior High
 1961 - G I JOE
 1975 - Vietnam Wall

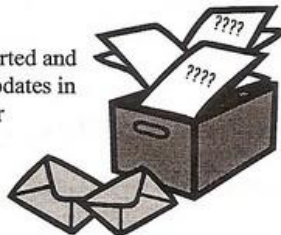
c. 1976-2000
 1970's Magnolia Classic buttons
 1970's Kamper Park Elephant
 1984 Hattiesburg's 100th birthday
 1998 Forrest County's 90th birthday

Collections Update

Thanks to the efforts of volunteers Bob Hendrix and Dee Tatum, we now have the following collections available for viewing:

- ◆ Mrs. Holcomb's Kindergarten pictures (1928-64)
- ◆ Margaret Conn's Dance Studio (circa 1939-77)
- ◆ Hattiesburg Area Historical Society Programs (1977-)
- ◆ Some Hattiesburg American photos (mostly undated)

Many boxes yet to be sorted and displayed. Watch for updates in following editions of our newsletter



HAHS Program

Stained Glass

by
 Dee Tatum

Of Seraphim Studios
 on

A brief history of glass and this ancient art form, as well as a demonstration of current developments and techniques in the world of stained glass.

Thursday - July 29, 1999 - 7 p.m.

HAHS Museum
 107 S. Park Avenue
 (in Kamper Park)
 No Charge - Public Invited



For information on becoming a member of HAHS or a volunteer for the Museum, contact the office at 545-4582 or visit the Museum during the hours listed in the newsletter.

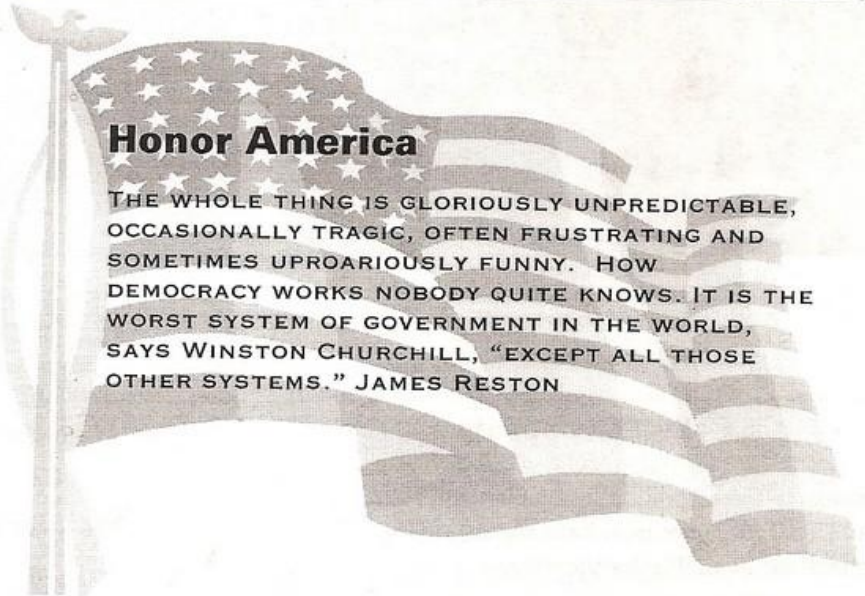
Special Thanks to Brian Blair for his work with the Hattiesburg High Class Photos. He is currently completed work on the Classes of 39,50, and 51.

Thanks to Sarah Ellen Gillespie for the WWII photo.

How to read your address label:

After the postal endorsement line there is a number which indicates the date in which your dues are paid thru this year

Postal endorsements	99
Mr. Historical Member	
123 Main Street	
Anycity, Anytown 12345	



In loving memory of

Dr. Emmett M. Herring
HAHS Vice President

September 17, 1922 – June 23, 1999

and grateful appreciation of his service to
Hattiesburg Area Historical Society