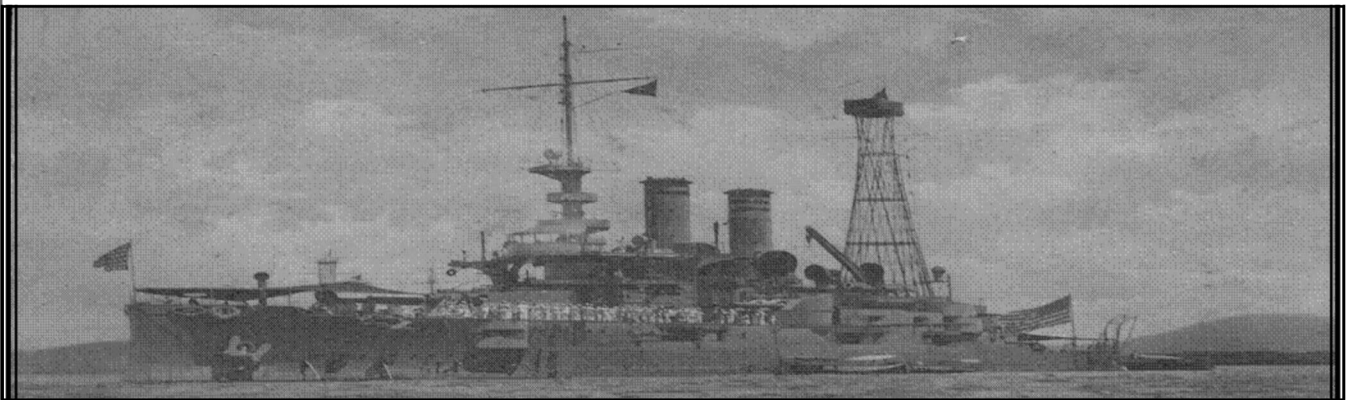


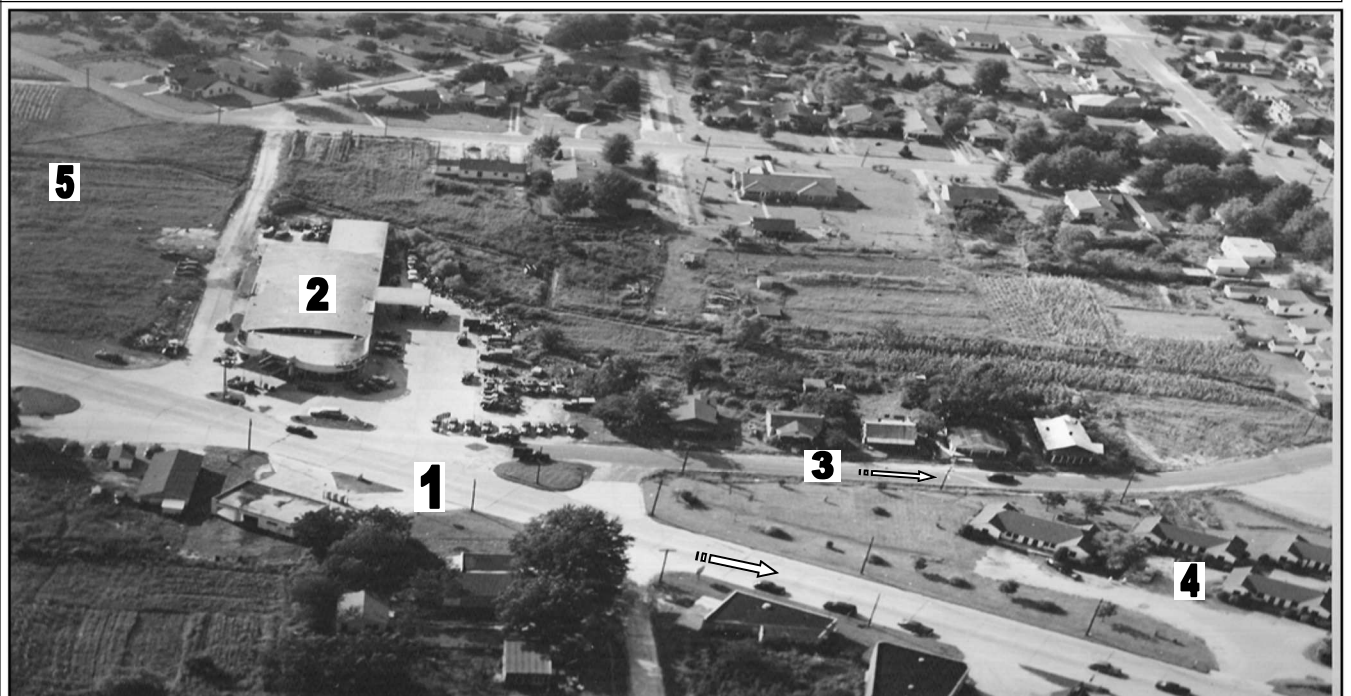
Hattiesburg Area Historical Society

HAHS MUSEUM
HATTIESBURG
CULTURAL CENTER
723 MAIN STREET
P O BOX 1573
HATTIESBURG MS
39403-1573
601 582-5460

From the HAHS Archives Thanks to our interested and generous donors many historical photos, papers, and books about the Pinebelt Area and Mississippi can be found in the HAHS Archives. Here are a few examples:



The USS Mississippi, launched January 25, 1917, served in the Atlantic and the Pacific. The battleship's distinguished service includes destroying a Japanese stronghold in an Okinawan castle, participating in the last fight between battleships, helping sink the Japanese taskforce in the Battle of Suriago Strait, and surviving a Kamikaze hit. "The Mighty Missy" was decommissioned on September 17, 1956. The official builder's model is on display at the Camp Shelby Armed Forces Museum. This circa 1917 photograph, from the HAHS Archives, was taken by N. Pomeroy and hand colored.

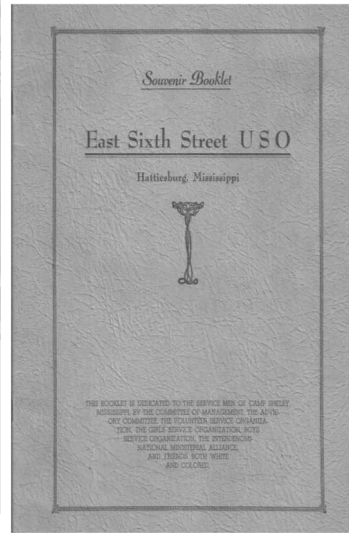


Can you identify the places in the 1952 aerial photo. Check your guesses on page 2.

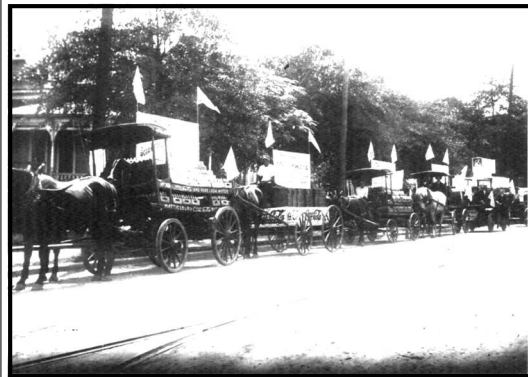
(Continued on page 2)



Frank M. Tatum, Chairman Management Committee, addresses the East 6th Street USO Club on its third anniversary. The Souvenir Booklet (on right) documents the 1945 celebration.
From the Shelby Pickett Papers Collection.

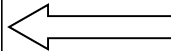


At the request of her *Hattiesburg American* paper boy, Gloria Coleman (pictured above) holds the latest edition and poses for her photo in front of her home on Miller Street at the end of WWII in May of 1945.
Donated by Gloria Coleman



Coca Cola wagons and cars line up on Main Street to parade with locally bottled drinks circa 1910.

Donated by Hugh M Howell



The booklet to the left was printed in time for New Year's greetings for 1909. It probably was sold November - December 1908.

It contains a detailed description of the tornado that struck Purvis at 2:13 P.M. on Friday April 24, 1908.

Included are names of the deceased, photos of damaged and destroyed homes and businesses, and an exciting account of the Paul-Revere-like rides of W. B. Alsworth and E.J. Calhoun. Because all the wires were down, the community was cut off from outside help. These two men made their way on horseback from Purvis to Richton in less than 50 minutes.

From Richton, Alsworth was able to call Hattiesburg's Mayor J. D. Donald requesting aid. The city of Hattiesburg responded with a 5:30 P.M. freight train loaded with supplies, physicians, nurses and other relief people including relatives of those stricken.

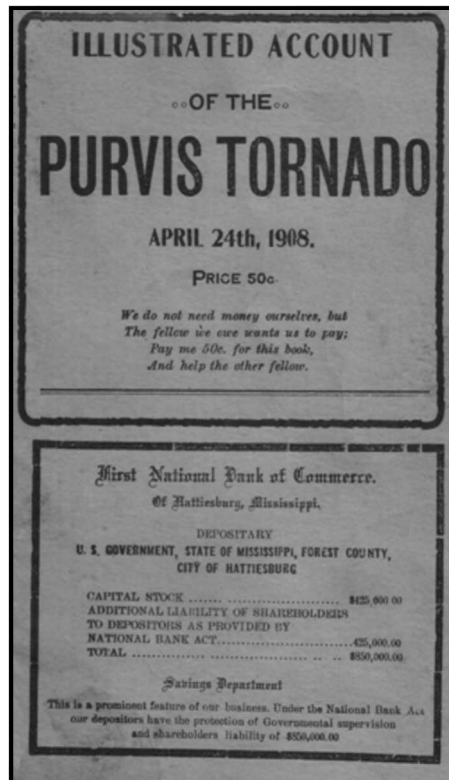
From the HAHS Archives

(Continued from page 1)

This 1952 aerial photo of Broadway Drive taken by Charles Charbonneau.

- ◆ (#1) known at the time as US Highway 11
- ◆ Joe Morris Motors (#2) surrounded by fields of crops.
- ◆ Corinne Street (#3) enters from the right.
- ◆ The Park Lane Motor Court (#4) appears on the bottom right.
- ◆ Future development will add the Broadway Mart Shopping Center in the field to the left (#5).

Donated by the family of photographer Charles Lewellyn Charbonneau



Gifts to the Society
Jan 6, 2017 - Oct 27, 2017

Estate of Frances Smith, by David Smith:

- Forrest Dairy 1 Qt bottle with tab top 40 Hattiesburg Hub Plastic Pins
- 24 Mississippi Plastic Pins
- Law Book - Mississippi Laws Passed 1/4/1910 - 4/16/1910 (owned by Tom Mabe Thornton)
- 2 Articles
The Seafarers Log 7/20/1945
Wainwright Liberator 10/16/1943

Lynn Meador:

- Office Supplies

Gloria G and Jeanette Coleman Trust:

- HHS Class Ring 1939 (SJC)
- HHS Class Ring 1940 (GGC)

Ursula Jones:

- Zeus Throws from past years
- Zeus Doubloons - various years

Mr. & Mrs. Rex Wiseman and Mrs Evelyn Wiseman:

- 45 Records, Assorted CD's, Framed Awards, Assorted Posters, Toy Truck

Elaine Knapp:

- MS Women's College Booklet
- Alpha PSI Omega Constitution
- Alpha PSI Omega Ceremonies
- Ration Book Holder & WWII Ration Stamps
- Tucker's Sanatorium of Meridian booklet
- 1945 Red Cross membership card with window stickers

Jimmy Pittman Estate by Lillian Pittman:

- WWI Camp Shelby Souvenir For Soldier's Mother "US Army for Freedom and Security pillow cover
- Antique Quilt Frame for hanging from ceiling 1943

Nancy McMillan:

- Deb Club photos '62, '64, '65 b&w
- Kappa Sigma photos '67, '68 b&w
- Delta Delta Delta photos '67, '68
- 8X10 b&w Hawkins & Howe Co.

- basketball team
- Assorted newspaper clippings
- 1980 BoD South MS Planning Development District calendar
- Jr Auxiliary 1962 cookbook
- Rainbow Garden Club 1956-1957 yearbook
- HHS 1966 Invitation
- Theta Chapter Phi Kappa Invitation
- Margaret Conn Stars of Tomorrow 1951 program
- Assorted booklets - HHS tours & info

Tom R. Phillips III

- Photo 1911 Spelling Champs HHS

Estate of Moran Pope Jr, by Melinda Pope DeRocker/Randy Pope

- Bottle Tree
- Chair
- Spittoon
- Coffee Mug
- Various books and booklets
- Lapel Pins

Cornell Malone

- Color Print of original artwork of his parents' business

Vesta E Jordan

- Photo of Royal St HS Class of 57

Kathy Pope

- Forrest County Circuit Clerk Sign

Mr. & Mrs. A T Tatum, Jr

- Various programs, booklets, calendars and brochures

Phyllis Bailey

- Penny Pinkerton Collection

Betty Bradley

- Churn
- Cooking Pot
- Home Canner
- Muffin Pan
- 1945 Washer
- Rope Bed
- Display Case

- Dolls
- Office Supplies

William T. Myers

- Paperback book: *World War Korea* © 2014 by Bill Myers (HHS class of 1949)

Robert Roseberry

- 2 pocket size bibles
- Note card, Memorial Program
- Plaque - HPTL in honor of Lloyd Roseberry contribution to musical life of south Mississippi

Bill Witch

- HHS annuals 1946, 1947
- Scrapbook 1946

Billy Fokakis

- Photo Arthur and Irene Fokakis circa 1920

Harry and Barbara Ward

- Full MS Governors' Colonel uniform of W G Gillespie

Mary Dryden

- Telephone - Western Electric Rotary Dial circa 1960

David Clark

- Greyhound Lines ticket Hattiesburg to New Orleans
- Alabama Luxury Tax Token

Thank you 

Monetary Donations***Life Members***

Elaine Bullock Arnold
Margaret Charbonneau
Mary Currie Dryden
Ilse Salem Hale
David and Pam Hamilton
Gene Kocktitzky
Charles Price
Frances Gale Saenz
Sylvia O Turner



HAHS MUSEUM
Post Office Box 1573
Hattiesburg, MS
39403-1573

Museum Hours
Monday, Tuesday and Thursday
2:00 – 4:30 p.m.
Or by appointment
Call 601-582-5460

Located in the
Hattiesburg Cultural Center
723 Main Street
Downtown
Hattiesburg, MS

Website:
www.hahsmuseum.org

Email:
hahsmuseum@megagate.com



Officers

President
Paula Harvey

Vice President
Ursula Jones

Secretary
Jeanne Herring

Treasurer
Barbara Curry

Historian/Parliamentarian
Tom Phillips III

Donors

Madeline & Howard Barker
Barbara Curry
Ensign John Sheldon Chapter, CDXVIIC
Lynn Gammill
Ilse Salem Hale
Hallie Jeanne Herring
Mary Kay Hudson
Ab & Connie Jones
Ursula R Jones
Penny Kochtitzky
Bruce Krell
Carol Love
Mrs Aubrey K Lucus
Lynn J Meador
Linda Morris
William T Myers
Norvall Robertson Chapter, NSDAR
Edwin Lloyd Pittman
Betty Ruth Scott
Dee & Tody Tatum
Mary Margaret Tatum
Sylvia O Turner
Alohandro Wooten

Honorariums

Lynn & Joe Meador
Ursula Jones

Memorials

James F & Minerva Suggs Blackwell
Bobby Lee Chain
Laurie Crowson
Sybil O'Dair
Tat Ott
Claude Pittman, Jr.
Claude Pittman, Sr.
Moran Pope, Jr.
Bob Shears
Mrs. J W Scott

HAHS OPEN HOUSE

Tuesday, January 23, 2018

2:00 p.m. - 7:00 p.m.

**Take a few minutes to stop in and see what is
happen in the Museum.**

Laurie Adams Crowson

August 20, 1934 - March 22, 2017

Since our last newsletter, HAHS lost a very valuable member of our team. Laurie Crowson was the heartbeat of our office. Those of you who had dealings with her know that. She kept the office running, always going above and beyond what was expected of her. Keep in mind she was a volunteer!

